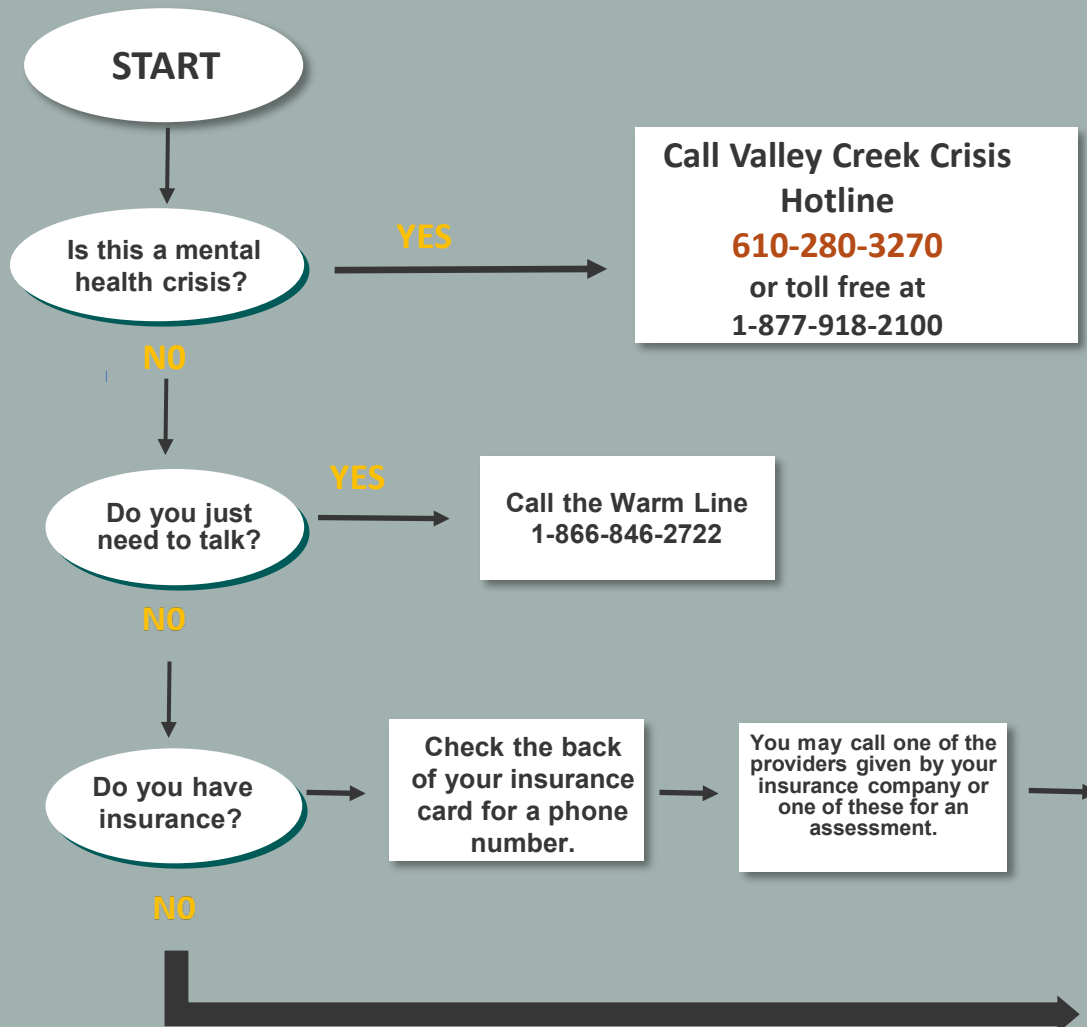


# How to Access Adult Mental Health Services in Chester County



## Adult Core Mental Health Service Providers

### **Creative Health Services**

- Pottstown: 484-941-0500

### **Fellowship Health Resources**

- Phoenixville: 610-415-9301

### **Holcomb Behavioral Health**

- Exton: 610-363-1488
- Kennett Square: 610-388-7400

### **Human Services, Inc.**

- Thorndale, Coatesville, Oxford: 610-873-1010

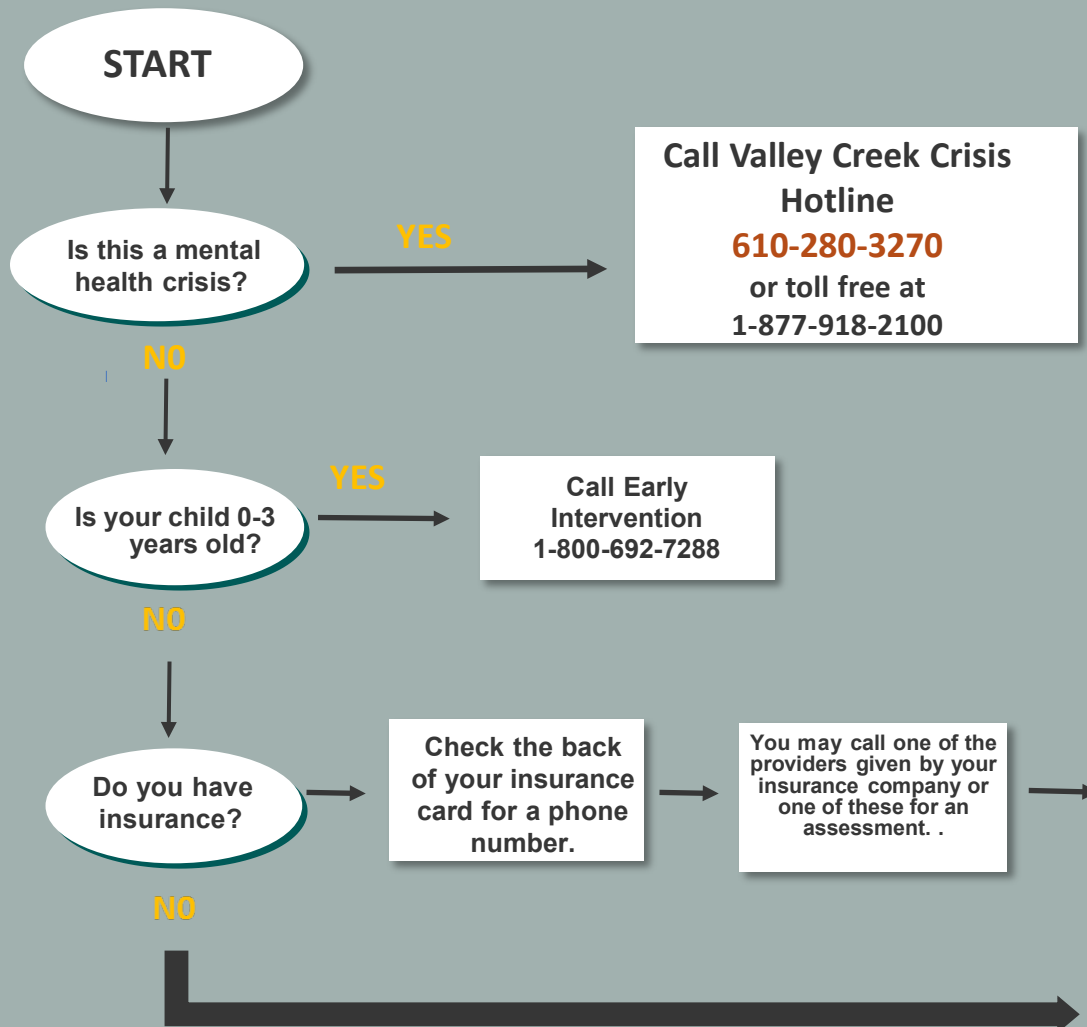
## **Need more information?**

Additional tips, tools and information about specific services are available in the Supplement.

## **Delays or difficulties?**

Contact Community Care if you have Medical Assistance (1-866-622-4228); if not contact Chester County Mental Health (610-344-6265)

# How to Access Child and Adolescent Mental Health Services in Chester County



## Child and Adolescent Core Mental Health Service Providers

### Child Guidance Resource Centers

- Coatesville: 610-383-5635

### Creative Health Services

- Pottstown: 484-941-0500
- Spring City: 610-388-7400

### Devereux Community Services

- Malvern: 610-933-8110

### Holcomb Behavioral Health

- Exton: 610-363-1488
- Kennett Square: 610-388-7400

### Need more information?

Additional tips, tools and information about specific services are available in the Supplement.

### Delays or difficulties?

Contact Community Care if you have Medical Assistance (1-866-622-4228); if not contact Chester County Mental Health (610-344-6265)



# For Mental Health Crisis

In Chester County, call Valley Creek Crisis  
Intervention **610-280-3270**



Chester County Warm Line –  
866-846-2722

1-800-273-TALK – press 1 for  
veterans

National Text Line – 741-741